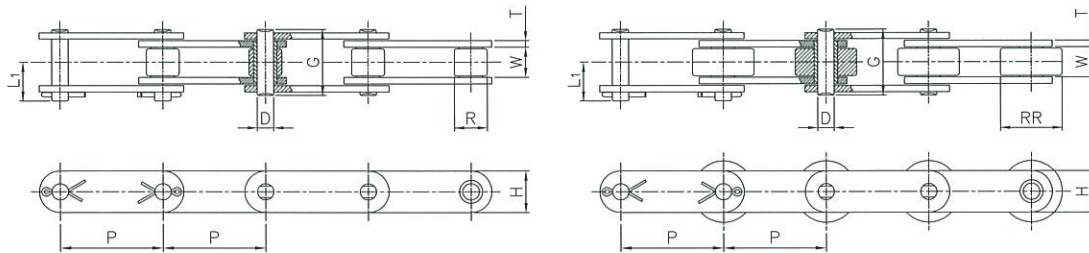


EK Double Pitch Roller Chain



Standard Roller

Large Roller

(mm)

EK Chain No.		Pitch P	Roller Link Width W(min.)	Roller Diameter		Pin Dia. D	Pin Length	
Standard Roller	Large Roller			Standard Roller R	Large Roller RR		L1	G
EK C2040	EK C2042	25.40	7.85	7.92	15.88	3.96	9.55	16.30
EK C2050	EK C2052	31.75	9.40	10.16	19.05	5.08	11.75	20.50
EK C2060	EK C2062	38.10	12.57	11.91	22.23	5.95	15.00	25.85
EK C2060H	EK C2062H						16.85	29.30
EK C2080	EK C2082	50.80	15.75	15.88	28.58	7.93	18.45	32.50
EK C2080H	EK C2082H						20.10	35.80
EK C2100	EK C2102	63.50	18.90	19.05	39.68	9.53	22.20	40.30
EK C2100H	EK C2102H						23.85	43.50
EK C2120	EK C2122	76.20	25.22	22.23	44.45	11.10	27.50	50.00
EK C2120H	EK C2122H						29.10	53.20

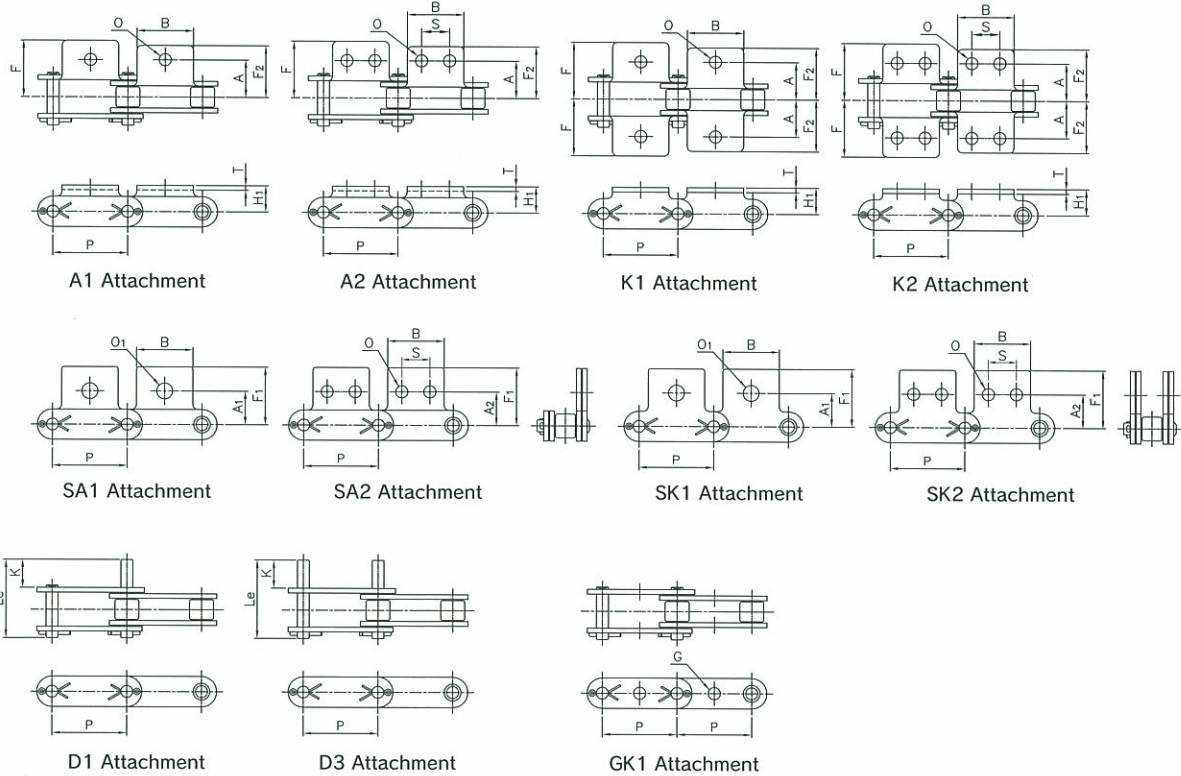
(mm)

EK Chain No.		Link Plate		Average Tensile Strength kN	Maximum Allowable Load kN	Approx. Weight	
Standard Roller	Large Roller	Thickness T	Height H(max.)			Standard Roller Kg/Meter	Large Roller Kg/Meter
EK C2040	EK C2042	1.5	11.7	19.1	3.6	0.49	0.84
EK C2050	EK C2052	2.0	14.9	31.3	6.3	0.81	1.28
EK C2060	EK C2062	2.4	17.0	44.1	8.8	1.14	1.85
EK C2060H	EK C2062H	3.2				1.43	2.14
EK C2080	EK C2082	3.2	23.0	78.4	14.7	2.03	3.09
EK C2080H	EK C2082H	4.0				2.46	3.51
EK C2100	EK C2102	4.0	28.8	117.6	22.5	3.22	5.43
EK C2100H	EK C2102H	4.8				3.84	6.03
EK C2120	EK C2122	4.8	35.5	166.7	30.4	4.50	7.50
EK C2120H	EK C2122H	5.6				5.65	8.18

NOTE:

- 1) Cotter pin type connecting link is standard. Clip type connecting link is available for EK C2040, 2050 and 2060(H), if so specified.
- 2) Offset link is available.
- 3) Heat treated large roller is standard. Non-heat treatment is available if so specified.
- 4) We offer plastic and rubber roller in addition to standard steel roller.

Double Pitch Roller Chain Attachment



(mm)

EK Chain No.		Attachment							
Standard Roller	Large Roller	A and K Type				SK and SA Type			
		A	F	F2	H1	A1	O1	A2	F1
EK C2040	EK C2042	12.70	19.0	17.4	9.10	11.10	5.2	13.5	19.8
EK C2050	EK C2052	15.88	24.1	22.0	11.10	14.30	6.8	15.9	24.6
EK C2060	EK C2062	21.43	29.2	26.7	14.70	17.50	8.7	19.1	30.6
EK C2060H	EK C2062H		31.4	28.1					
EK C2080	EK C2082	27.78	39.5	36.1	19.10	22.20	10.3	25.4	41.4
EK C2080H	EK C2082H		41.7	37.5					
EK C2100	EK C2102	33.34	50.0	45.9	23.80	28.60	14.3	31.8	53.0
EK C2100H	EK C2102H		52.2	47.3					
EK C2120	EK C2122	39.69	60.7	55.4	27.80	33.30	16.0	37.3	60.0
EK C2120H	EK C2122H		60.7	54.4					

(mm)

EK Chain No.		Attachment						Additional Weight		
Standard Roller	Large Roller	A, K, SK and SA Type			GK1 Type	D1 and D3 Type		g/Att.		
		O	S	B	G	Le	K	A, SA	K, SK	D1
EK C2040	EK C2042	3.6	9.53	19.3	4.2	26.40	9.52	3.0	6.0	1.0
EK C2050	EK C2052	5.2	11.91	24.0	5.2	32.80	11.91	6.0	12.0	2.0
EK C2060	EK C2062	5.2	14.30	28.8	-	40.80	14.27	13.0	26.0	3.0
EK C2060H	EK C2062H				6.2	44.50		17.0	34.0	
EK C2080	EK C2082	6.8	19.05	38.1	-	52.35	19.05	30.0	60.0	7.0
EK C2080H	EK C2082H				8.2	55.45		37.0	74.0	
EK C2100	EK C2102	8.4	23.81	47.6	-	63.80	23.83	56.0	112.0	12.0
EK C2100H	EK C2102H				10.2	67.05		67.0	134.0	
EK C2120	EK C2122	9.9	25.58	57.2	-	78.30	28.58	86.0	172.0	20.0
EK C2120H	EK C2122H				-	81.50		100.0	200.0	

Note:

1) G1 attachment is furnished with a hole on one side.